

# Storage Tank Accessories

[Repair Kits for Pillow Tanks](#) consist of a patch of fabric, that matches the tank it is needed for, scissors, an adhesive, a roller and sand paper. Instructions will also be provided for proper education on how to repair the tank.

The kits are made for small leaks in the tank. It's best to keep on hand for any emergency that may occur from an unexpected leak. They are easy to use and include everything needed to repair the leak.

Products that use the repair are:

- Any Flexible tank (including the onion tank)
- Frame tanks
- Aluminum angle and foam wall berms
- Ground Cloth



**Repair Kits**



**Ground Tarp/Flat Liner**

[Flat liners or Ground tarps](#) are made to go under tanks and provide protection from the ground its set on. Flexible pillow tanks are recommended to have one of these tarps under it and the when used will expand the life of the tank. These tarps are also used as secondary containment for other tank and berms. Residentially they have been used under above ground pools and underlining for tents.

The flat liners are made from either coated PVC or vinyl. The size and weight of the liner are completely customizable. The weight options are 10 oz., 18 oz., 22oz., and 30 oz.

[Fittings](#) are available in a range of type, sizes, and material for almost all products. A variety of bulkhead fittings, welded half and full coupled, needle type, ball valves, gauges, drum type, adapters, manways and many others can be bought. Materials used to make these include PVC, PP, CPVP, and PE.

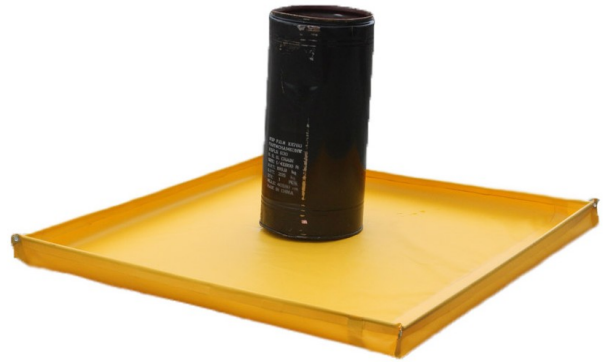


**Fittings**

# Tanks Accessories

[Berms](#) are a form of secondary containment made to go under tanks, drums, vehicles or other items storing contents that require control. The berms come in a variety of types, sizes, material and purposes.

The [mini berm](#) is the smallest berm offered, ranging in sizes from 2' x 2' to 5' x 5'. Designed for containment of cans, drum and other small equipment. Material used to make this berm depends on the use of the berm and can be made from 18 or 22 oz. PVC, Elvaloy, XR-5 or Urethane. A fiber glass rod is installed in the berm so it can be easily rolled up and stored.



[Mini Berm](#)



[Foam Wall Berm](#)

[Foam/Air wall berm](#) are design with for the purpose of being able to take a vehicle through the berm, without damage. The walls bend to pressure without breaking. Ground tarp are often used with these berms in case the contents of the berm escape while bending for vehicles entering. They can be made of LLDPE, reinforced PVC, XR-5, Elvaloy or Polyurethane, with a height ranging from 4-8 inches.

This berm is easy to deploy and can be compacted to easily store. It's best used in fueling processes, transportation of leaking/potentially leaking products, and fuel tank containment, to name a few of its employments.

[Drive Through berms](#) have two walls made foam, like foam wall berm, to guide a vehicle in and out from the two points. The other two walls made with aluminum angles that can NOT be driven over without causing damage.

This berm can be made from LLDPE, PVC, Elvaloy XR-5, and Urethane. With thickness ranging from 22– 40 oz., depending on the application it is to be used for. The drive through berm is used for similar applications as the foam but the aluminum angle sides provide additional height that the foam cannot reach.



[Mini Berm](#)

# Tanks Accessories

[Aluminum angle berms](#) are made for containment for objects that do not need to be driven onto the berm. The Aluminum L brackets allow the berm to be a foot high for more containment than other berms.

The liner material of the berm can be made from LLDPE, reinforced PVC, XR-5, elvaloy or polyurethane. The berm comes in many size options starting with 8' x 8' to 15' by 66'.

The aluminum angle berm is commonly used for chemical and oil containment, frac tank containment, long term tank storage and oil drum storage.



[Aluminum angle Berm](#)

---



*Poly spill basins*

---

[Poly spill basins](#) are an open top sump-like containment for vertical tanks. They are made from polyethylene so they can be exposed to chemicals, have a higher resistant to UV rays and will not rust. For there size, they are light in weight and come with a handle. The basin is has sizes that run from 385 gallons up to 8,750 gallons, that they can contain. Depending on the size some of the basins may be tapered helping further control the contents.